

# PMO 2018 U.I.O. 2 - Ex Comprensorio 12

## Tavola 1 - Tipologia di lavoro

### Legenda

#### numero sfalci

— 1

— 2

#### scavi

— Amministrazione diretta

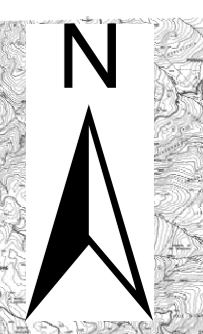
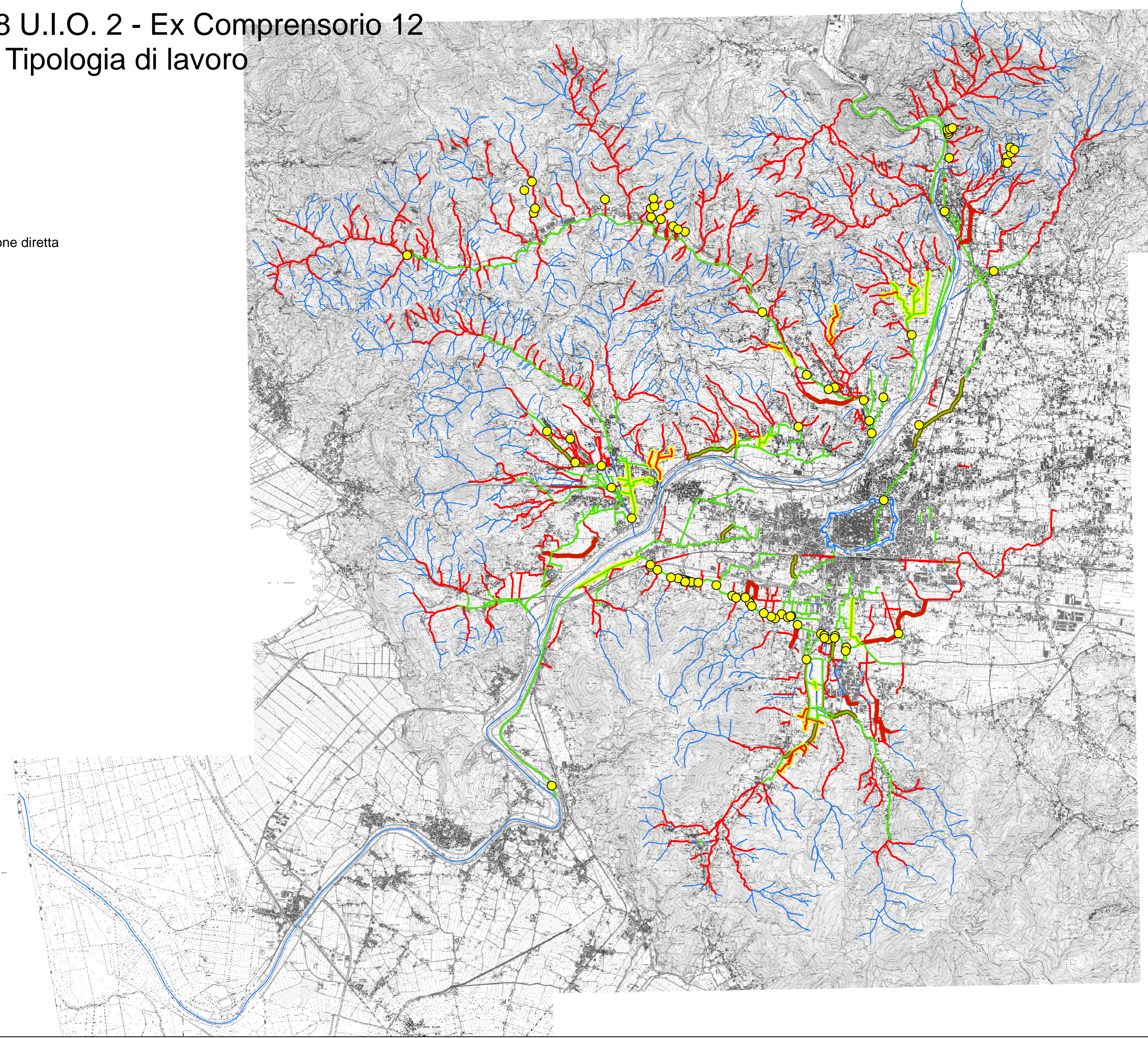
— Appalto

#### opere

●

#### vigilanza

—



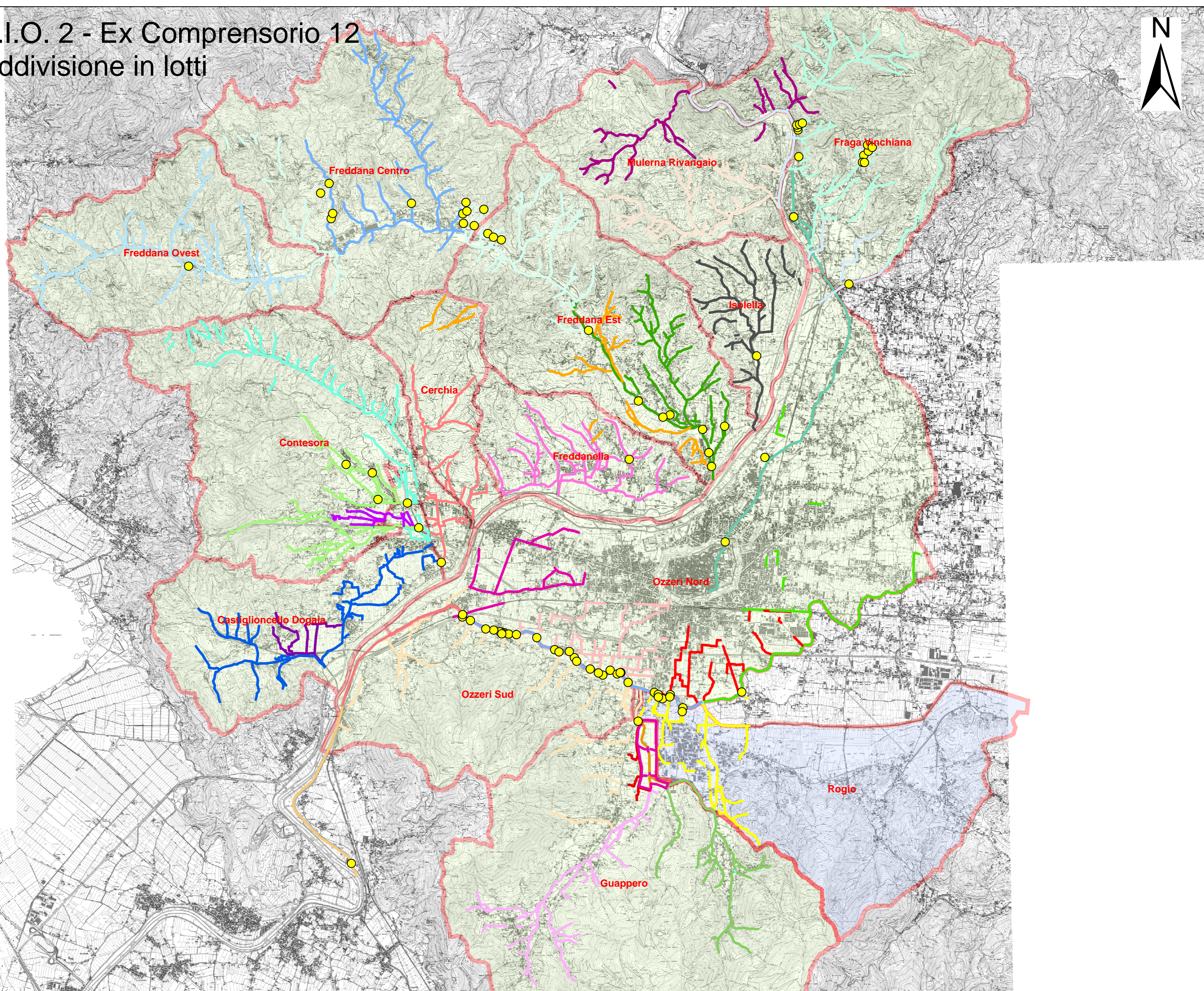
# PMO 2018 U.I.O. 2 - Ex Comprensorio 12

## Tavola 2 - Suddivisione in lotti



### Legenda

- 51
- 52
- 53
- 54
- 55
- 56
- 57
- 58
- 59
- 60
- 61
- 62
- 63
- 64
- 65
- 66
- 67
- 68
- 69
- 70
- 74
- 75
- 76
- 77
- 78
- 79
- 80
- 81
- 82
- 83
- 84
- 85
- Opere
- Rogio
- Bacini ex 12



# Legenda

— Vigilanza

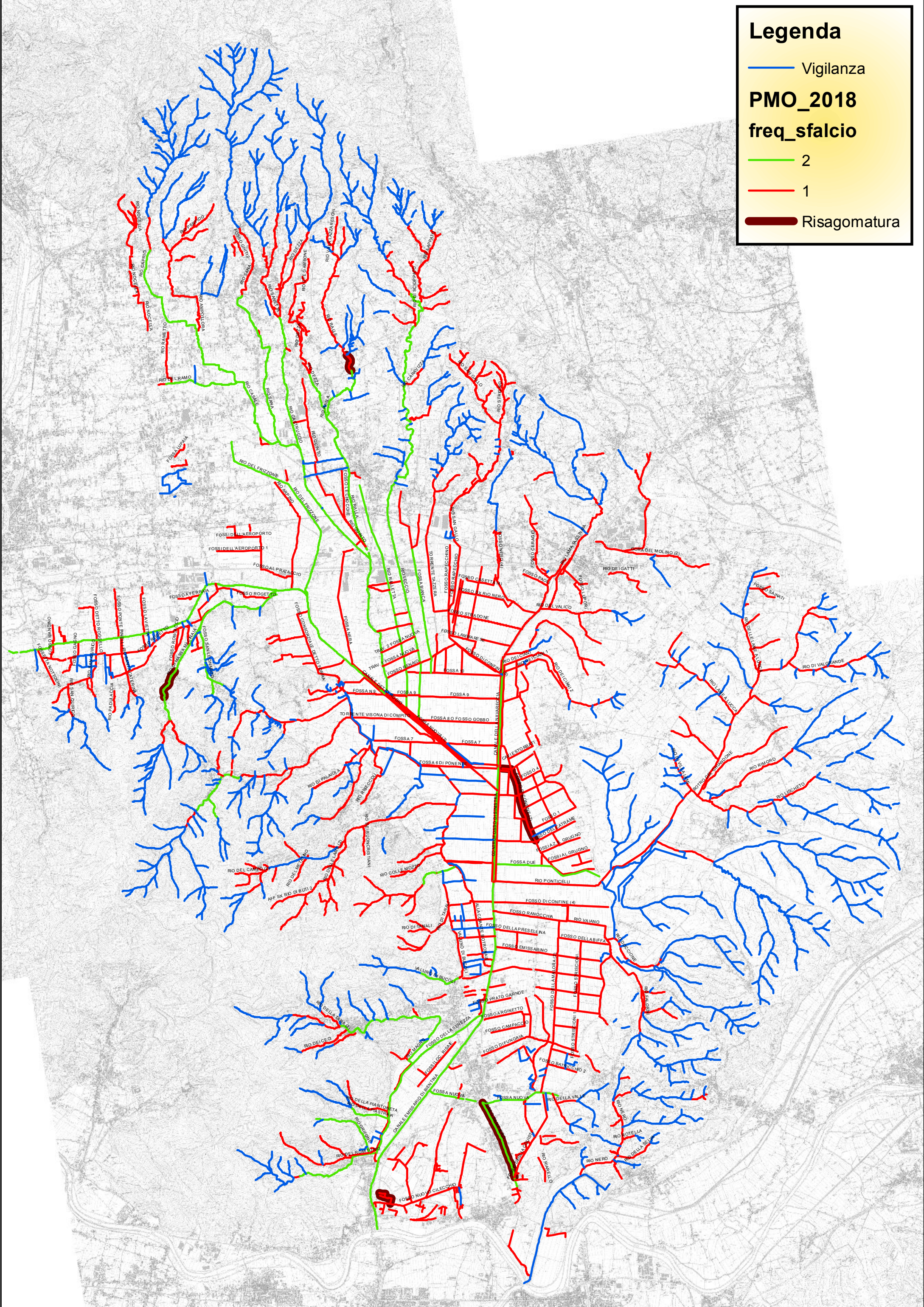
**PMO\_2018**

**freq\_sfalcio**

— 2

— 1

— Risagomatura

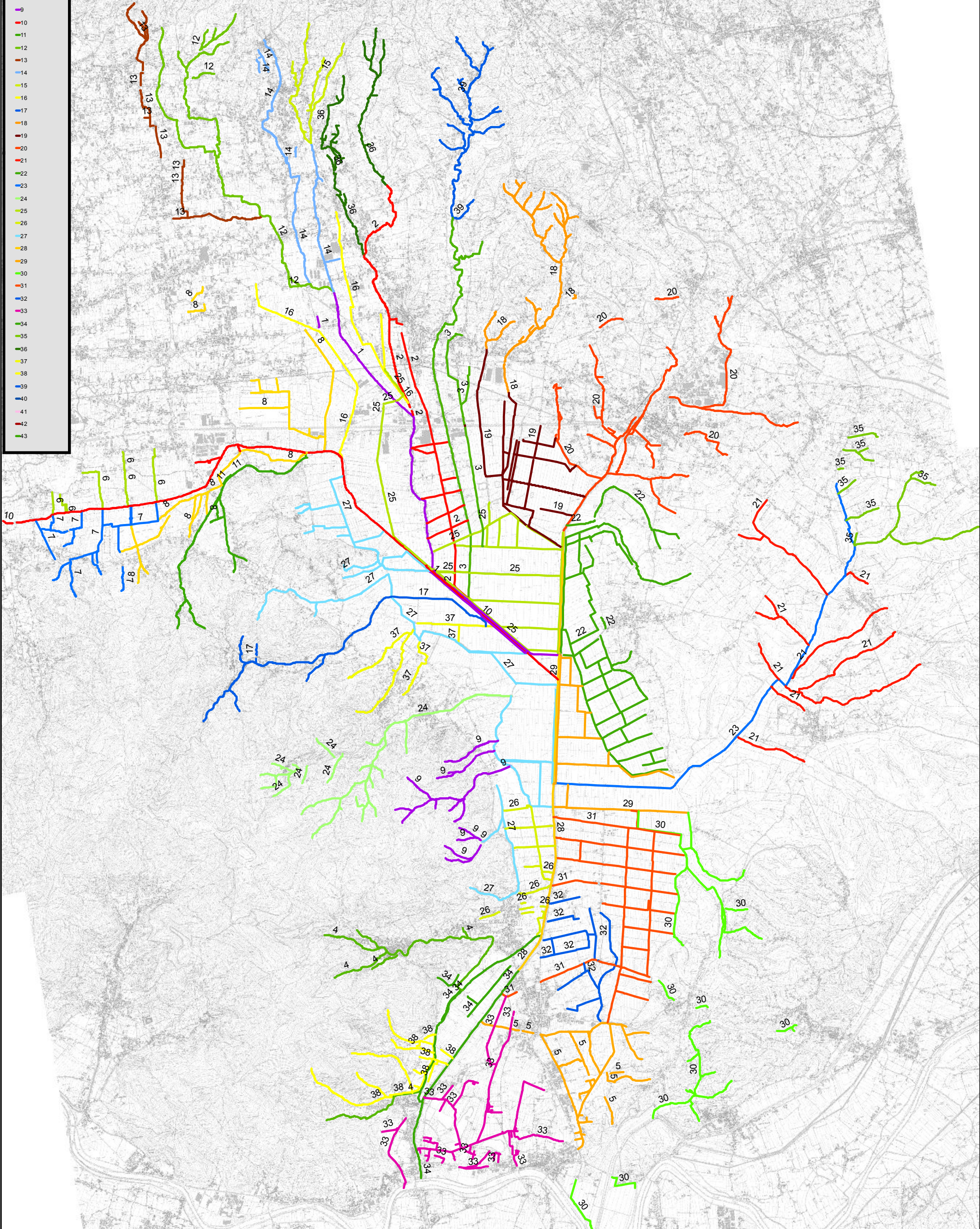


Legenda

PMO 2018

Lotto\_2018

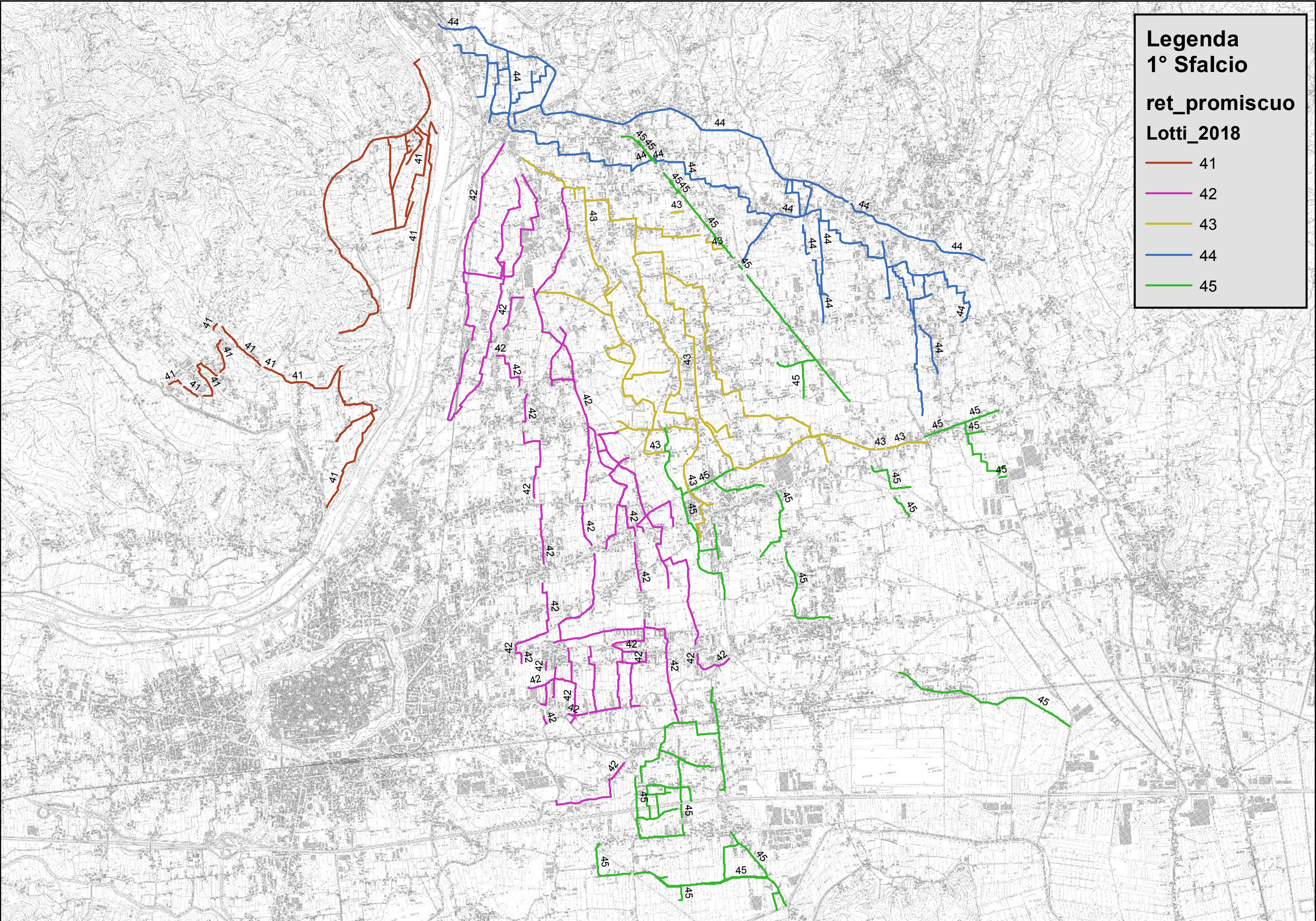
- 1
- 2
- 3
- 4
- 5
- 6
- 7
- 8
- 9
- 10
- 11
- 12
- 13
- 14
- 15
- 16
- 17
- 18
- 19
- 20
- 21
- 22
- 23
- 24
- 25
- 26
- 27
- 28
- 29
- 30
- 31
- 32
- 33
- 34
- 35
- 36
- 37
- 38
- 39
- 40
- 41
- 42
- 43



**Legenda**  
**1° Sfalcio**

**ret\_promiscuo**  
**Lotti\_2018**

- 41
- 42
- 43
- 44
- 45



**Legenda**  
**2° Sfalcio e Scavo**

— 46 Scavo

— 47 2° Sfalcio

